
October 2023 News!

1 message

Mapua Hall Society <mapuahallsociety@gmail.com>

Mon, Oct 2, 2023 at 8:59 AM

Reply-To: mapuahallsociety@gmail.com

To: marionawayfromhome@gmail.com

News from your community hall

Hello Dear Hall Community,

Māpua Hall Society News:**Māpua Hall Regular Groups:**

School Holidays will run from **23rd September - 8th October** there may be some regular session that take a break. During the holidays we also have the Tasman National Art Awards exhibition in the Main Hall with regular classes held in the Bill Marris where possible, please check with your instructors.

Lynda's Aerobics & Pilates start back from 10th October, please check with Lynda for session times.

West African Dance & Dance Hall classes running from 11th October on Wednesday's from 11am-12.30pm contact [Anita Gonzalez](#) for more info.

Sue would like to facilitate a Silver Swans style ballet/movement session in the Bill Marris room one day a week. Please email [Mapua Hall office](#) to register your interest.

Events:

Tasman National Art Awards Come along for the Awards Presentations on Saturday 23rd from 7pm. Exhibition from **Sunday 24th September - Sunday 8th October** open 9.30am-4.30pm daily with free entry.

There are plenty of ongoing Community events including a '**Meet the Candidates**' session date TBC, the **General Election** on Saturday 14th October in the Main Hall and the **Latin America & Spain Film Festival** on Saturday 21st October in the Bill Marris room.

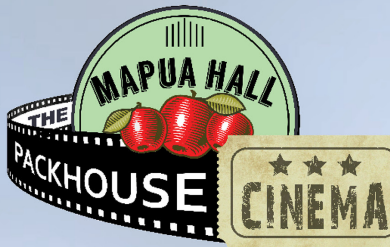
Take care, From your Hall Coordinator.

**We love to hear your feedback and suggestions,
our Hall is 100% built, owned and run by our community.**



For latest updates & news follow us on Facebook, Instagram, website or email enquiries.

Packhouse Cinema Presents



Sunday 15th October

'An Education' screening at Māpua Hall

Tickets \$12 / Community & Gold Cards \$8

Doors open 6pm

Bring your own camp chair, snacks & drinks.



A fundraising event for Māpua Community Hall

Proudly Supported by

 **architecture studio | mapua**



Date: Sunday 15 October 2023

Location: Mapua Community Hall

Time: Doors open at 6pm, film talk begins at 6.30pm

Price: Adults \$12, Community Services & Gold Cards \$8

We are excited to screen Lone Scherfig's 2009 film *An Education*. Viewers are transported to the heart of 1960s suburban London, where a bright and ambitious sixteen-year-old girl, Jenny, portrayed by the talented Carey Mulligan, embarks on a journey that challenges societal norms and expectations.

Set against the backdrop of post-war Britain, the film masterfully explores themes of education, desire, class, and personal growth. Jenny's life takes a captivating turn when she encounters David, a charming older man played by Peter Sarsgaard. Their blossoming relationship raises questions about the traditional path to success, as Jenny grapples with the allure of a different, more unconventional life.

An Education shines a spotlight on the restrictive gender roles and expectations that burdened women during that era, as Jenny's quest for independence pushes boundaries. Moreover, the film delves into the dynamics of class, highlighting how social and economic disparities impact individuals' life choices.


This film is a cinematic gem that invites viewers to reflect on their own lives and the contemporary society in which we live. It's a captivating journey through the swinging '60s, a time of change and self-discovery,

We hope you can make it to enjoy a night out, fundraising for our hall - BYO drinks and snacks.





CLASSES

Regular Activities: there may be changes to our regular time table

Please check the live calender at MapuaHall.org

 **Regular activities at Māpua Hall** @MāpuaCommunityHall : www.MāpuaHall.org

OCTOBER 2023

MONDAY	TUESDAY	WEDNESDAY	THURSDAY	FRIDAY
9.00 am SUPERB DANCE Move Good Now	9.00 am PANZ Pastel Artists of NZ	9.15 am AEROBICS* with Lynda		9.15 am STRENGTH / CARDIO* with Lynda
	9.00 am SIoux LINE DANCE*	9.15 am SLOW YOGA* with Nikki	9.30am MĀPUA ART GROUP	9.15 am YOGA with Martin
	10.00 am MĀPUA CREATIVE FIBRE 2nd Tuesdays	10.15 am PILATES* with Lynda		10.15 am PILATES* with Lynda
3.30 pm BALLET 3-4yrs* Kerry Clarke Dance		11am WEST AFRICAN DANCE		
4.00 pm BALLET 5-7yrs* Kerry Clark Dance		11.30am TAI CHI* INTERNAL ARTS		
5.30 pm BROGA YOGA* with Nikki	6.00 pm STRENGTH / CARDIO* with Lynda	6.00 pm Māpua Football Club	7.30 pm MĀPUA COMMUNITY CHOIR	
7.00 pm MĀPUA HALL SOCIETY Meeting 3rd Mondays	6.00 pm YOGA with Martin			
7.15 pm MDCA PUBLIC MEET 2nd Mondays				

* School Holidays 23rd Sept-8th October, some sessions on break.

The Mapua Hall is a community owned, non-for-profit facility, largely run by volunteers.

If you are a regular user of this facility we would like your feedback as we are reviewing our services, including but not limited to the fees we charge.

Please take a few minutes to complete the survey below.

The information provided in the survey will only be used by the Hall Committee for the purpose of the service review and not be made available to others.

User Survey

EVENTS

THE MĀPUA HALL MAKERS MARKET



Sunday 12th November 2023
10am - 3pm

Support Local 🌸 Buy Local 🌸 Love Local

Save the date for the Christmas Market on Sunday 12th November.

Follow on Facebook [The Mapua Hall Makers Market](#) and on Instagram follow [@TheMapuaMarket](#). Stall holder enquiries email MapuaMakersMarket@gmail.com



MAPUA HALL SOCIETY FY24 Membership

Annual Financial Membership
1st April - 31st March from **\$20** per person.

Membership benefits include:

- Hall Society E-Newsletter
- Regular activities info
- Event news
- Pre-sales to Hall Society events
- Eligible for full voting rights at AGM

Fill out the on-line membership form at:

www.MapuaHall.org

Membership

Many Thanks to the wonderful local trades that look after us with our
daily maintenance and running issues :

Overland Electrical

Mapua Plumbing

Nelson TV Services

Māpua 4 Square



MĀPUA COMMUNITY HALL KEY FUNDING PARTNERS



**Many Thanks to the continued support
of our financial members**

Copyright © 2014 Mapua Hall Society, All rights reserved.

Our mailing address:

72 Aranui Road
Mapua, 7005

Contact:

03)540 2330
MapuaHallSociety@gmail.com

[unsubscribe from this list](#) [update subscription preferences](#)

