
re -MDCA meeting Monday 14th August

2 messages

Marion Satherley <marionawayfromhome@gmail.com>
To: Mike Kininmonth <mike.kininmonth@tasman.govt.nz>

Mon, Aug 14, 2023 at 10:38 PM

Hi Mike,
things for you to follow up on:-

Surveillance cameras located on a lamp post near TEORA Health: Lynley asked what this camera is for – it states its for Streets for People but doesn't elaborate. **Clr Mike to follow this up**

Cheers Marion

Mike Kininmonth <mike.kininmonth@tasman.govt.nz>
To: Paul McIntosh <pmcintosh64@yahoo.com>, Marion Satherley <marionawayfromhome@gmail.com>
Cc: Christeen Mackenzie <Christeen.Mackenzie@tasman.govt.nz>, Dan Shallcrass <Dan.Shallcrass@tasman.govt.nz>

Tue, Aug 15, 2023 at 2:05 PM

Hello Paul and Marion,

Please find response from Joe, regarding camera on Aranui Road.

Please circulate around your membership?

Regards

Mike Kininmonth

Councillor | Kaikaunihiera

Call +64 3 543 8400 | mike.kininmonth@tasman.govt.nz

Private Bag 4, Richmond 7050, NZ

Te Kaunihiera o
te tai o Aorere

This e-mail message and any attached files may contain confidential information, and may be subject to legal professional privilege. If you are not the intended recipient, please delete

From: Joe Bywater <joe.bywater@tasman.govt.nz>
Sent: Tuesday, August 15, 2023 1:59 PM
To: Jamie McPherson <Jamie.McPherson@tasman.govt.nz>
Cc: Mike Kininmonth <mike.kininmonth@tasman.govt.nz>; Vincent Revell <vincent@revelldevelopments.nz>
Subject: RE: re -MDCA meeting Monday 14th August

Kia ora Mike,

The cameras are providing insight into how the community are currently using Aranui Road. They're collecting the following data;

- Pedestrian and cyclist behaviour and crossing points.
- Volume and time distribution of users by classification (cyclist, pedestrian and motor vehicles).
- Motor vehicle speeds on Aranui Road.
- The interactions between pedestrian, cyclists and motor vehicles in the town centre.

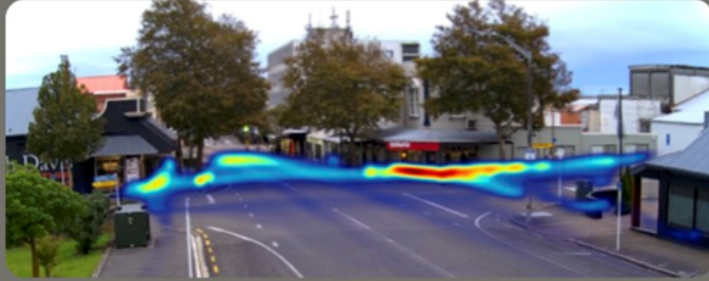
We will receive a number of data points, as well as heat maps below.

Having this data before and after construction will be one way of measuring success (or lack thereof which hopefully won't be the case)

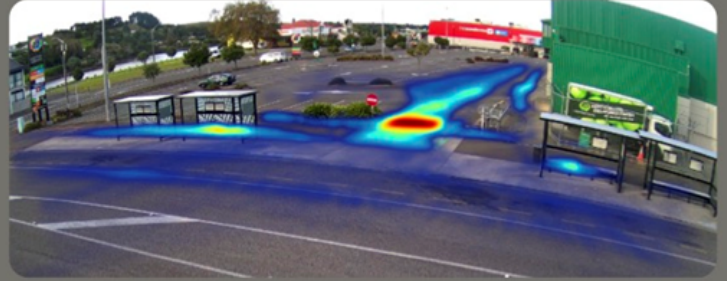
This raw footage is held locally on the cameras, which is password protected and accessible by one person (Bradley from Folk).
Once Bradley has put this footage through some analysis and interpretive software, the footage will be deleted.

FYI – Vincent is back on board now so have cc'd him in this response

These heatmaps shows areas where pedestrians and cyclists intersect with other vehicles. Hot areas represent places with high potential collision occurrence. Cold areas represent areas with lower collision occurrence. Please note: This aspect of analysis is still in development and will be further refined for the final report.



Guyton & Wicksteed Streets.



St Hill Street.

Joe Bywater | Community Infrastructure

Project Manager

Mobile +64 27 259 2321

From: Jamie McPherson <Jamie.McPherson@tasman.govt.nz>
Sent: Tuesday, August 15, 2023 12:52 PM
To: Joe Bywater <joe.bywater@tasman.govt.nz>
Cc: Mike Kininmonth <mike.kininmonth@tasman.govt.nz>
Subject: FW: re -MDCA meeting Monday 14th August

Hi Joe

Can you please give Cr Kininmonth the details?

thanks

Jamie McPherson | Community Infrastructure

Transportation Manager

Mobile +64 27 600 8447 | DDI +64 3 543 7256

From: Mike Kininmonth <mike.kininmonth@tasman.govt.nz>
Sent: Tuesday, August 15, 2023 12:13 PM
To: Jamie McPherson <Jamie.McPherson@tasman.govt.nz>
Subject: FW: re -MDCA meeting Monday 14th August

Hello Jamie,

At last nights Mapua Community Assn meeting, people present asked whats the story with the new camera on Aranui Road.