

**June 2023 News!**

1 message

**Mapua Hall Society** <mapuahallsociety@gmail.com>  
Reply-To: mapuahallsociety@gmail.com  
To: marionawayfromhome@gmail.com

Thu, Jun 1, 2023 at 12:42 PM

**News from your community hall . . . . .**

Hello Dear Hall Community,

**Māpua Hall Society 2023 AGM - Monday 19th June at 7pm - Bill Marris room**

Join us for the Māpua Hall AGM as we reflect on the past year and discuss our plans for the future. Nominations are in and we will have a full team for 2023/24 we would love to share our ideas and hear your thoughts, tea/ coffee and refreshments will be provided.

**Events:**

The Hall is busy with events happening in June including

Ongoing consultations with 'Streets for People Working Group';

Local Matters public talk "Doughnuts and Degrowth – Imagining a new Future" at 7pm on Wednesday 7th;

Sioux Line Dance mid year social on Saturday 10th at 3pm;

Motueka Social Dance on Saturday 17th at 7.30pm.

**Packhouse Cinema: Screening in June - Baz Luhrmanns' ELVIS**

Screenings during winter once a month on Sunday evenings at 6.30pm start, same place with a bonus screening on the following Monday morning from 10am for a '**Bring your Baby**' session. These are very popular as young families can find themselves a little stranded from their usual social life and offers a reprieve once a month to go out and do something 'normal' again as they find their feet in parenthood.

**Tickets \$12 at the door; bring your own drinks, snacks and a chair.**

*Take care, From your Hall Coordinator.*

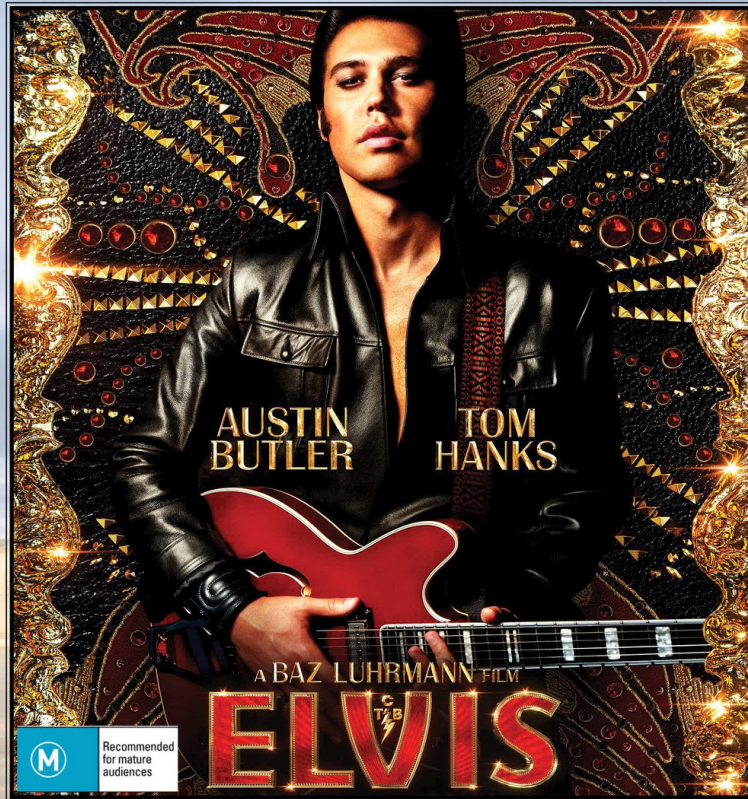
**We love to hear your feedback and suggestions,  
our Hall is 100% built, owned and run by our community.**



**Sunday 11th June, 6.30pm**

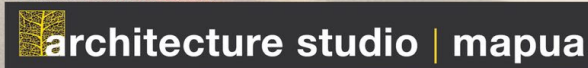
'Bring you Baby' edition

**Monday 12th June, 10am**



Tickets \$12 at the door: Bring you own camp chair, snacks & drinks.  
A fundraising event for Māpua Community Hall

Proudly Supported by



## CLASSES

Regular Activities: there may be changes to our regular time table

Please check the live calender at [MapuaHall.org](http://MapuaHall.org)

Regular activities at Māpua Hall @MāpuaCommunityHall : [www.MāpuaHall.org](http://www.MāpuaHall.org)

**JUNE 2023**

MONDAY	TUESDAY	WEDNESDAY	THURSDAY	FRIDAY
9.00 am <b>SUPERB DANCE</b> Move Good Now	9.00 am <b>PANZ</b> Pastel Artists of NZ	9.15 am <b>AEROBICS</b> with Lynda		9.15 am <b>STRENGTH / CARDIO</b> with Lynda
	9.00 am <b>SIOUX LINE DANCE</b>	9.15 am <b>SLOW YOGA</b> with Nikki	9.30am <b>MĀPUA ART GROUP</b>	9.15 am <b>YOGA</b> with Martin
1.00 pm <b>YOGA</b> with Trudy	10.00 am <b>MĀPUA CREATIVE FIBRE</b> 2nd Tuesdays	10.15 am <b>PILATES</b> with Lynda		10.15 am <b>PILATES</b> with Lynda
3.30 pm <b>BALLET 3-4yrs</b> Kerry Clarke Dance		11.30am <b>TAI CHI</b> <b>INTERNAL ARTS</b>		
4.00 pm <b>BALLET 5-7yrs</b> Kerry Clark Dance				2.00 pm <b>FRIENDSHIP GROUP</b> 3rd & last Fridays
5.30 pm <b>BROGA YOGA</b> with Nikki	6.00 pm <b>STRENGTH / CARDIO</b> with Lynda	6.00 pm <b>Māpua Football Club</b>	7.30 pm <b>MĀPUA COMMUNITY CHOIR</b>	
7.00 pm <b>MĀPUA HALL SOCIETY</b> Meeting 3rd Mondays	6.00 pm <b>YOGA</b> with Martin			
7.15 pm <b>MDCA PUBLIC MEET</b> 2nd Mondays				

# EVENTS



## IMAGINING A NEW FUTURE

WED 7 JUNE 7.30 PM MĀPUA HALL \$10 STUDENTS FREE

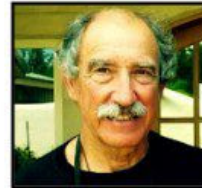
Gareth Hughes



20 years as an activist, politician and political commentator. Now Gareth is leading the Wellbeing Economy Alliance Aotearoa.

Can we begin to imagine a new future, one that ensures wellbeing for ALL on a healthy planet? Essential to this will be the re-design of our economic paradigm away from one of relentless and unsustainable growth. Positive alternatives are inspiring people around the world and here they will be explored with Gareth Hughes and Jack Santa Barbara. It is a privilege to welcome their wisdom and knowledge to Māpua. Hosted by Local Matters, Motueka Greens.

Jack Santa Barbara



Jack is a Motueka local. He is an academic, writer, environmental and peace activist, retired CEO and expert on paths for change.

MAPUA  
PUBLIC HALL  
SOCIETY  
AGM 2023



MONDAY  
19TH JUNE  
7:00 PM  
MAPUA HALL

COME ALONG AND CELEBRATE OUR COMMUNITY HALL  
ALL WELCOME.

Membership



MAPUA HALL SOCIETY  
FY24 Membership

Annual Financial Membership  
1st April - 31st March from **\$20** per person.

**Membership benefits include:**

- Hall Society E-Newsletter
- Regular activities info
- Event news
- Pre-sales to Hall Society events
- Eligible for full voting rights at AGM

Fill out the on-line membership form at:

**[www.MapuaHall.org](http://www.MapuaHall.org)**





# MĀPUA COMMUNITY HALL KEY FUNDING PARTNERS



**Many Thanks to the continued support  
of our financial members**

Copyright © 2014 Mapua Hall Society, All rights reserved.

**Our mailing address:**  
72 Aranui Road  
Mapua, 7005

**Contact:**  
03)540 2330  
MapuaHallSociety@gmail.com

[unsubscribe from this list](#) [update subscription preferences](#)

Grow your business with  mailchimp