



ANNUAL EXECUTIVE REPORT

September 2020 – August 2021

Chairperson:

By Marion Satherley

This is the end of my three year term as chair and I would like to sincerely thank all our members, the Executive team, our Ward Councillors (Anne Turley, Christeen MacKenzie & Dean McNamara and David Ogilvie from the Motueka Ward) who regularly attend our monthly public meetings along with the help and support of Janine Dowling (TDC CEO), Mayor Tim King, and all other TDC staff who have been willing to aid MDCA throughout the year.

MDCA would not function or reap the benefits of the successes we experience without the help and dedication of all those listed above.

For any community association to be effective and progressive it must first have residents within the community who show an interest in the well being of the community in which they live. A community must also have residents who have a passion and desire to put their hand up to muck in and do the work. I have always found volunteering in community to be rewarding, where one develops new relationships, while giving back, but also learning new skills, discovering skills you may not even be aware you possess by being challenged in new and exciting ways.

Once again, we are looking for new members on our executive team. If you are a team player and possess the willingness to work collaboratively to give back to your community, I would love to hear from you and hopefully welcome you onto our team.

During past twelve months the executive team have gone from strength to strength with many long term projects gaining a huge amount of traction while others have been completed.

Our membership has been the strongest it has ever been with still much room for improvement, especially if one considers our residential population.

It is hugely important residents show an interest in the community in which they live and it is vital that residents make the effort to connect themselves with their community.

For MDCA to represent the community fully, we must continue to reach out and prompt the significant contribution MDCA provides the community to enhance the future sustainability and liveability of our village and surrounds.

Therefore, I would urge each and every member to talk to your friend, family and neighbours about the work being done by MDCA, and invite them to become a member. Membership can easily be achieved online via our website ourmapua.org.

Even though it is great to see members at our public meetings this is not a necessity of membership. Membership however does provide the opportunity of becoming connected and kept up to date with what is going on in our community via our emailed minutes and documents as well as through our website ourmapua.org.

MDCA was formed back in 1948, and has a long service history to our community and it is up to all of us to ensure this legacy continues.

Like every situation when you have a group of people you have a range of differing opinions and points of view. The important thing is to remember it is not always possible to please

everyone; however, it is possible to give everyone the opportunity to be heard, the opportunity to question, and the opportunity to listen.

From these opportunities comes the ability to hear a wider range of opinions, and if we all hold the goal of effective problem solving, we can identify the common threads, and by being prepared to compromise, a win win solution for the community can be achieved.

A variety of guest speakers have honoured us with extremely interesting presentation.

They include: -

Steph Naldie – Tasman Environment Plan

Jeremy Butler & Kathy Fletcher – Tasman Resource Management Plan

Carla Arkless – Advanced Care Plan

Paul McIntosh – Māpua Livability Proposal

Rob O'Grady – Māpua Water, Wastewater & Storm Water upgrade

Drew Bryant & Clare Scott – Nelson Tasman Public Transport Plan & Draft Regional Land Transport Plan

TDC Mayor, CEO, Staff & Ward Councillors – Long Term Plan

Dwayne Fletcher & Barry Johnson – Deferred Residential Zoning

Māpua Young Families Representatives – Living in Māpua

Jan Heijs – His concerns and Māpua Vision

Carla Lane & Constable Grant Heney – Drug & Alcohol Addiction Abuse

I continue to attend as many TACA (Tasman Area Community Assn) meetings as possible each month. The continuing collaboration of this relationship is proving to be very valuable. Paul McIntosh the Chair of our Liveability Mapua Subcommittee will be gave a presentation at TACA's AGM on the 29th July.

One of the big learning's I have discovered over my three years of being chair is that patience and persistence are an important quality to posses.

It has taken three years from the planning stage of the upgrade to the Mapua Recreation Reserve Playground before most of the equipment has been installed. (interrupted during this time by three major civil defence events – a fire, a cyclone; and then the Covid 19 pandemic) There are still a couple of items left to be completed but I am hoping by the time you read this full completion may have been achieved.

The playground redevelopment has been a long haul project, but I have to say that outcome is exceptional.

TDC is under a lot of pressure from Central Government at the moment and this could very well flow on to impact us as a community and how much say we have in the future direction of our community and how it functions. What this could mean actually mean for how we live within our community is a matter of waiting to see.

We need to remain vigilant if we want to continue to have input into our own and our communities destinies.

There are some exciting changes TDC are planning with regard active transportation and how we move around and between our communities (cycling, walking, mobility scooters, foot scooters etc). It will be important that residents keep a close eye on these developments and make sure that you are ready to participate in the consultation process once it becomes available.

I would like to personally thank all those who made submissions to the Tasman Resource Management Plan (TRMP), the Long Term Plan (TLP), and the Reserve Review.

With the later, we (the community) were successful in securing a change in reserve status for both Dominion Flats and Aranui Park from 'Recreation Reserve' which meant that buildings could have been a future possibility within these areas to 'Scenic Reserve B' which gives both areas the protection from change and damage they both deserve. Well done team.

Through the Liveability Mapua group we are continuing to look at how we improve sustainability, transportation, protection of significant trees etc for our community. Paul McIntosh accompanied myself made a presentation to TDC's Strategy & Planning Committee in April which was well received by all ward councillors.

The following projects MDCA have undertaken and have now been completed:

1. The placement of four community seats. One at 72 Stafford Drive, one at 144 Aranui road, Māpua Hall, & cnr Langford Dr & Aranui road. A huge thank you to Helen Bibby for leading this project and all her willing working to restore the seats, for concreting the pads under the seats and for installing them.
2. Aquarium Plaque has been manufactured and looks great. Thank you to TDC Commercial Depart. for a 50% contribution, for working with MDCA to find a suitable location. The plaques final resting place be within a new, safe pedestrian entry access path that has yet to be formalised. A big thank you to Grant Palliser for the design & to Mike Kininmonth for following through with getting it manufactured.

Each executive member has had a portfolio during the past year, and considering we are all volunteers, much has been achieved. A brief summary of these portfolios includes:

- a) Treasurer: As always Aileen does a sterling job. Her reports are clear and she communicates well. Thank you Aileen See separate report below.
- b) Secretary: Thank you Bob. It has been a pleasure working alongside you.
- c) Vice Chair: Wayne thank you for continued support.
- d) Roads & Pathways Portfolio: Wayne is a master of perseverance, patience and grace. Wayne is a very good role model. See separate reports below.
- e) Dominion Flats Restoration Project: The growth in Dominion Flats from one year to another is incredible. One can almost see the trees growing. Thank you Helen and your team of willing workers for your continued dedication to ensure this area is going to be one that will be treasured and enjoyed for many generations to come. A truly inspiring effort by all involved. See separate report below
- f) Social Media and Website Maintenance: Thank you Bruno overcoming all the technical challenges you have been confronted with over the past year. Thank you for updating the website to include a community service directory, linking all our meeting documents and for keeping the wider community connected via MDCA's facebook page. See separate report below.
- g) Community Hub & Willing Wheels: These two associated projects has gone from strength to strength with some truly amazing outcomes being achieved in the past year. Thank you Elena for your continued tenacity to champion these projects. I know it hasn't been all smooth sailing but the initial vision is starting to gain some really good traction. See separate report below.
- h) Mapua Liveability: Thank you Paul for the passion you show to this subcommittee. Also a big thank you the other members of this committee (David Mitchell, David Briggs, Bruce Gilkison & Wayne Chisnall). It is a pleasure to be working alongside such a group of positive, caring people. See separate report attached
- i) Mapua Memories: A big thank you to Mike Kininmonth for co-ordinating this project and helping it gain the traction it has with seven interviews now under our belts. A huge thank you also goes to Margaret Cotter for baking the shortbread we give each interviewee as a token of appreciation and to Polytech student Sarah Francis for you film/video expertise. I for one have enjoyed reconnecting with those residents how have deep and interesting roots to our community.
- j) Good Sorts: Thank you to Esme Palliser for getting this programme set up. I'd also like to thank Esme for organising many of the guest speakers we have had present to us at our public meeting over the past year. I am sure you will all agree with me how interesting they have been.

As you can see MDCA continue to add value and enhance our community. This is a great achievement for a team of volunteers with whom I am extremely grateful for their time, energy and dedication.

As the saying goes, 'many hands make light work'. And we are more than willing to welcome others to share the load, or even possibly look at achieving more for you our community residents. Please consider your availability and make contact with either myself or MDCA.

I am proud to say we have faced some issues head on this year and risen above them with our heads held high. I am grateful on so many levels to all that work within and with us in MDCA and I feel confident the association is in an extremely strong and positive position moving forward.

If you have any questions, suggestions, or feedback, the executive team are always available, willing and welcome anything you may be willing to share. Email us at ourmapua.org

See portfolio's reports below:-

Treasurer & Member Services: (please also see yearend account summary and notes to accounts – see ourmapua.org)

by Aileen Connell

At the end of the 2021 financial year (30 June 2020) we had 126 members.

We are again grateful for the grant from the TDC for community consultation funding and the membership fee paid by our members. Our membership list is updated as fees are paid. All members receive an email acknowledgment of membership. We use the most up to date membership list for each member mail out.

We have 3 automatic payments set up

- \$200 for secretary honorarium
- \$100 for Social media honorarium
- \$62.60 for Māpua Hall (meeting room hire for the monthly Public and Exec meetings)

The MDCA has one bank account which is split into 8 distinct groups (for this financial year) for reporting purposes and allow us to keep track of income and expenditure for the various sub committees / projects that are tasked with managing these grants

- General Fund
 - o Monies from membership fees and grant from the TDC
 - o Use to pay Honoraria, meeting room hire, website and other admin costs required to run the association
- Dominion Flats
 - o All monies are from grants and donations
 - o Spending is controlled by the Dominion Flats sub committee
- Waterfront Park
 - o Monies are remainder of funds from Aquarium Trust Fund, the remainder of Seating project funds and a donation from the TDC and MDCA.
 - o This fund is now closed following the purchase of a plaque to commemorate the "Touch the Sea Aquarium"
- AED fund
 - o Donation from Club Māpua and excess from Givealittle Fundraising for new AED
 - o Spending for repair and upkeep of units
- Seating Project
 - o Donation
 - o Spending for seats between Ruby and Māpua for rest stops
 - o This project is now complete
- Mapua Memories
 - o Grant received from TDC
 - o Project to capture video interviews / memories from locals who have lived in the area for a long time and seen the changes that have occurred.
 - o Costs for equipment required and professional video editing
- Community Hub
 - o Donation Māpua Ruby Bay Community Trust
 - o Feasibility study to find who / which organisation may use the Community Hub
 - o This project is now complete

As of the 30th June 2021 there is \$5,342.32 in our bank account.

The year end accounts are currently under review, a report will not be ready in time for the AGM meeting

If any member wants more detailed info about our accounts, please let me know and I will be happy to help

Dominion Flats Sub-committee:

By Helen Bibby

We are now getting to the end of year 8 of the restoration project that began in November 2013. What a transformation! With grants, donations and many hours of hard work by many people we now have the beginnings of a native bush reserve that will be there for years to come.

This year, using a grant through Tasman Environmental Trust and Billion Trees Government money we have had another 2000 plants put in by school children and members of our community which means that we now have plants in all areas. From now on we will be in-filling and adding selected plants throughout the reserve, and of course, continuing with weed control and plant releasing.

We are pleased to know that Dominion Flats has been classed as Scenic Reserve B in the recent reviewing of Reserve classifications.

Once again, a HUGE thank you to all who have contributed throughout the year.

Roads and Footpaths:

By Wayne Chisnal

The major achievement for this year has been the development of the secure pathway from Dominion Flats to the top of Māpua Drive. This was a major construction with the unstable bank being battered, drainage being incorporated and the pathway being protected by an armco barrier. The project was subject to a 6 month safety audit and various requirements will be addressed as funding comes available. Some signage has been installed but the cycle crossing with resting barrier between #72 and # 73 Māpua Drive has yet to happen. The speed limit change warning up from the Highway is still being considered.

Pathways as part of the active transport plan are being included in the Māpua Livability discussions. It is important for the community requirements to be considered as the various proposed housing developments go through the Resource Management process.

Projects for the future include improvement of the right of way from Aranui Road to the Bowling Club and completion of the pathway from the Māpua Inlets development along the Seaton Valley Stream to the Old Mill Pathway. This will require negotiation with Landowners to install 2 sets of kissing gates to enable safe access across private driveways.

AED Support:

By Wayne Chisnal

Dr Jim Vause has agreed to take over the MDCA AED portfolio, officially taking over at the AGM.

Jim and I have checked all the devices the MDCA are responsible for. The one at the Wharf had been interfered with and I subsequently found the batteries and pads were about to expire. I ordered replacements from Zoll through our contact at Jennian Homes and we were able to install these. These cost \$278, leaving \$445 in the AED fund.

We now have a list of all the serial numbers and relevant expiry dates that Jim holds:

- Wharf - 2026
- Community Hall – 2022
- Cushlas – 11/2021 (replacements will be ordered) - the key for this is unique and a spare is held just inside the door of the store.
- Ruby Bay Hair Lounge/ Takeaway – 2025 (This device was funded via Givealittle in 2020)
- The 4 Square Store device is a different brand and the store holds the key

All the devices have a green tick, denoting viability, showing. The expiry dates are evident on the yellow tabs poking out of the devices.

Jim, Anita and I all hold a key for these Zoll devices. Jim also has the expired pads that can be used for training purposes. We probably need to set up another community training session and Jim is looking into options. Zoll have a very good video on their website.

The Māpua Medical Centre is the dropoff point for used Devices and Sue Fox will be advised that Jim is now the point of contact for checking these out after use.

The AED Committee is as follows:

Chair designate – Jim Vause E: jv@gponline.co.nz M: 021 301 649

Wharf: Maggie Pidgeon E: maggiepidgeon@gmail.com

Hall: Anita Green E: anitagreennz@gmail.com

Cushlas: Sharon Corbett E: info@accentbnb.co.nz

Ruby Bay Hair/Takeaway: Wayne Chisnall E: wchisnall@gmail.com M: 027 568 2375

Social Media:

Submitted by: Bruno Lemke,

Facebook:

42 Facebook postings; listing those with more than 100 engagements (in brackets)

- What new roads are proposed in the rapidly developing Māpua District? September 2020 (328)
- Application for a New Liquor Licence corner of Aranui Road and Māpua Drive August 2020 (265)
- Māpua School Good Sorts November 2020 (256)
- The Ngaio Reserve (by the wharf) development April 2021 (235)
- David Mitchell Good Sorts August 2020 (198)
- Margaret Cotter – 2020 TDC Community Service Award August 2020 (179)
- Video: Community pre-consultation (Tasman Resource Management Plan): Roads, Trees: September 2020 (168)
- Kai Collective good-sorts May 2021 (168)
- Video: Young Persons forum June 2021 (146)
- Dominion Flats update November 2020 (128)
- Video: TDC long term plan April 2021 (108)
- Māpua's Unique identity November 2020 (104)

Facebook “job” page that advertised for a Coordinator for Māpua Willing Wheels (see Wellbeing report) attracted some very good applicants.

Web site: (www.ourMapua.org)

Our Māpua home page has now been set-up and enlivened with a more visually appealing landing page.

The home page now includes Aranui Park history and Information on TDCs reserves. We want to get a move on about populating the page with other Māpua environment information.

Community Directory has been installed and all community services emailed to check whether their data was correct. Most got back to update directory. This will be ongoing work. 158 hits on this site – which is similar to the hits we get on the website with details of monthly meetings.

Police postings relevant to Māpua and Districts now included in monthly reports.

Rienhard made good progress on updating the projector/sound system. Jan has taken over the control of the projector and the hearing loop. All seem to be working well, but need to use microphones to have the hearing loop working.

Community Transport & Hub:

Submitted by: Elena Meredith

Māpua Willing Wheels supported by MDCA & Nelson Tasman Community Transport Trust has now been operating under the co-ordination of Rachel Mason for a year. Funding for this position has been accessed from MSD; Mapua Community Trust and the RATA Foundation.

There are 12 voluntary drivers and passenger numbers are slowly increasing month by month. Information about this service and testimonials from users/drivers can be found on MDCA's facebook site.

Community Hub

The possible transformation of "The Old Church" in Aranui Road into a Community Hub has been advancing this past year including formalising a governance relationship between the Māpua Community Wellbeing Trust(MCWT) and the Working Group. An initial building inspection and suggestions from an architect have provided a rough idea of potential costs. Funding from the Māpua & Districts Community Grant scheme supported a data gathering process of the numbers and requirements of potential hub users. This data has also formed the basis of an online community directory on the MDCA Website page as well as being part of the requirements for a feasibility study.

Connections have been made with other community organizations which are forming the basis of a potential network of local community service/support services

Māpua Memories

By Mike Kininmonth

The project is on track for completion in the 2024-25 year. Feedback from interviewees is positive and that the project is well worthwhile.

Video editor (Sarah Francis) has completed editing the first interview with very positive comments.

Both Marion and myself have made significant learning's as the interviews progress, with emphasis on keeping the interviewees focused on their upbringing. Noting that as the interviewees become younger, the time to record their recollections is shorter.

Tasman District Council Oral Histories Library (Pania Walton) has indicated a wish to receive a copy of each completed interview, which has meant changes to the Recording Agreement and Consent forms.

Initial issues of running out of battery power have been overcome by purchasing a second battery. We can now record for approx. 5 hours.

Each interviewee receives a small token of our appreciation, being home-made biscuits, by Margaret Cotter.

There has been no request for reimbursement of fuel etc.

Looking forward

In the 2021-22 year, we envisage an increase in rate of interviews and that as the numbers increase, costs to edit will become a significant portion of the expenditure.

The project is yet to purchase USB sticks, for each interviewee. Approx cost to purchase \$500.00

Projected # of interviews: 2022-23 =18; 2023-24 =18; 2024-25 = balance

Livability Māpua Working Group (LMWG):

By Paul McIntosh

Early in 2021, the MDCA Executive identified an opportunity to provide improved strategic alignment around and clearer communication of a number of separate initiatives and/or areas of community interest. Example of such initiatives were maintaining and expanding our green spaces, Aranui Park / Wetlands protection, tree preservation, a more extensive and connected walking and cycle pathway network, and better engagement with and influence of stakeholders such as the TDC and Developers. This led to the formation of the Māpua Liveability Working Group (MLWG).

The inaugural MLWG meeting was attended by Marion Satherley, Wayne Chisnall, David Mitchell, Dave Briggs, Paul McIntosh and Bruce Gilkison (host). Following a roundtable discussion, a number of unifying themes were agreed, namely Sustainability, Inclusiveness, Connectiveness, Value of Natural, Future Focus and Resilience, with the unifying "umbrella theme" being Liveability.

MDCA actions to kick-start the MLWG were

- Review National Policy on Wetlands (completed - David Mitchell provided a briefing memo and related maps and Dave Briggs provided a submission regarding the lack of urgent action in the TDC's LTP climate change commitments)
- Review existing Mapua Plans for infrastructure, zoning and subdivision and (completed by both MLWG and MDCA members)
- Refresh our Vision of Future Mapua (using existing brainstorm ideas from Oct/Nov session)
- Develop better understanding of National vs Regional urbanization policies (ongoing)
- Develop set of measurable objectives to track progress towards a more Livable Mapua (pending)
- Promote Wetlands / Reserves as an enabler of a connected cycle / walk way network (ongoing)
- Propose "no build" areas and more flexible housing options / choices (pending)
- Regular and targeted engagement plans for influencing Councilors and TDC (ongoing)

A proposal was made for Paul McIntosh to lead the MLWG and he subsequently presented summary of the meeting outcomes at the April MDCA Community Meeting. The presentation was well-received and Councilor's (Christeen Mckenzie, Anne Turley, Dean McNamara & David Ogilvie) invited the MDCA (Paul McIntosh and Marion Satherley) to present to the TDC Strategy and Policy Committee on April 15th, which was a very important step in socializing and gaining support for MLWG's goals. The key outcomes of this meeting were then shared by Paul at the April MDCA Executive meeting, together with an overview of Tasman Future Development Strategy.

Additionally, during March/April/May, the MLWG and MDCA members participated in a number of important meetings and/or made submissions to the TDC in support of MLWG's goals, including on the Regional Land Transport & Regional Public Transport Plans (Drew Bryant & Claire Scott), Plan Change 73 Omnibus, TDC's 2021-2031 LTP (Tim King / Janine Dowding), including the potential impacts of the upcoming 3 Waters, RMA and Local Govt reforms and timing of the ongoing Tasman Environmental Plan (TEP), Parks and Reserves Review submissions public meeting attended by Marion and Wayne, and TDC presented the results of the Deferred Residential Lands review prompted by the completion of significant infrastructure upgrades in our area (Dwayne Fletcher Barry Johnson).

Given the very significant efforts being made on a number of separate and related initiatives, it became clear to the MDCA executive that many community concerns such as those listed above which have up to this time been treated as "general business" could be better managed together under the LMWG. This would not only formalize and work and reporting on our efforts being made on these important areas, but also facilitate establishing some key milestones / metrics to measure progress being made towards our shared goal on a more Livable Māpua.

The MDCA Executive agreed that the MLWG should reconvene to finalize its remit and, given the somewhat expanding scope of the LMWG, discuss how each of the Working Group members could better contribute to the overall effort that included its aspirations and a set of realistic goals, how it intends to get buy in and ownership from TDC staff and key stakeholders, timeframes for key events/decisions, reporting and a review of abilities/knowledge required to complement team.

Following the 2nd Meeting of the MLWG, the following outcomes were shared with and endorsed by the MDCA Executive and were subsequently shared at the June Public meeting:

MLWG goal is to provide strategic leadership and high level oversight of the various tactical MDCA initiatives in support of our agreed themes (Sustainability, Inclusiveness, Connectiveness, Value of Natural, Future Focus, Resilience). We would like to see the high level aspirations for our community that have been outlined in the Future Development Strategy (FDS), Tasman Environmental Plan (TEP) and Long Terms Plans (LTPs) be operationalized. To achieve this, the LMWG will strive to grow/build relationships with both

local and national government and relevant stakeholder groups at a critical time of change (RMA, 3 Waters, Local Govt reforms etc). We will also work to quantify the impact of new housing development in our district in terms of climate change impacts, tree loss, vehicle emissions etc, see how it is all connected, consider appropriate mitigation measures and set real targets on our path to a more Livable Community

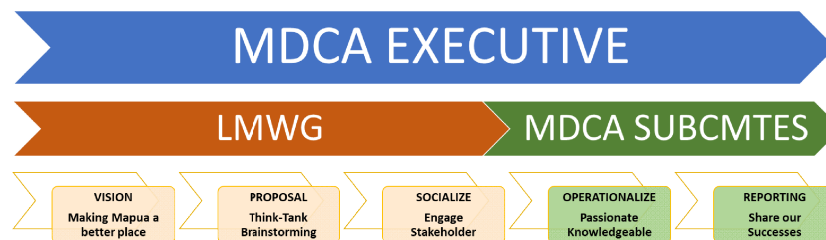
Importantly, ongoing cooperation between our regions various Community Associations in support of our commons goals will provide a strong voice to our elected local government representatives and hopefully encourage some to be passionate advocates for our cause. If successful, this will allow Community Associations to engage early, knowledgably and in a value-adding way to better influence the post-PMA legislative landscape and inform the various local government reviews underway. Ultimately, our goal should be to change the rules that Developers must follow and ensure that the aspirations for our region put forward in the FDS and TEP are a binding requirement of future subdivision Resource Consents and Council Long Term Plans.

MLWG Charter

- Vision - make Māpua a better place for both current and future generations - be good ancestors
- Supports Environmentally and Socially sustainable growth within our community - make our own reality
- Be a Think-Tank for community projects aligned with our Vision - make proposals for positive change
- Support MDCA subcommittees and member/resident efforts to operationalize current & future initiatives
- Champion common themes & purpose of our community efforts - via stakeholder engagement & communication
- Be respectful in all Stakeholder engagements - speaking with one voice as a positive, solution-oriented partner

MLWG Member Focus Areas / Roles

- David Mitchell - Local Wetlands / Flora / Environmental challenges
- Bruce Gilkison - Climate Change and Connectivity
- Wayne Chisnall - Roads and Pathways safety and connectivity - expanding our network
- Marion Satherley - External stakeholder management and communication
- Dave Briggs - Broader national context - mapping / analysis / stakeholder education
- Paul McIntosh - Internal stakeholder management, project prioritization / integration / tracking & metrics



Most recent activity has included a follow-up meeting with the TDC to provide Māpua-specific input to their evolving Active Transport Strategy.

Finally, the MDCA has been invited to present the MLWG's strategy to the Tasman Area Community Association (TACA) at their AGM in late July, which will also be attended by Mayor Tim King and TDC CEO Janine Dowding. This will provide another great opportunity to further socialize our efforts. TACA also expressed interest in the Active Transport Strategy meeting (as noted above) with MDCA suggesting it would be a good for TACA & MDCA to work collaboratively together to ensure a good cycle/walkway network linked both communities together.

Māpua Waterfront Working Group (MWWG):

By Marion Satherley

After three long years of planning the Ngaio Reserve redevelopment is almost fully completed (just awaiting a Pou and interpretive panels) and it looks fantastic. The space is clean and crisp and looks so much bigger than it did before. Well done to the MWWG, TDC Parks & Reserves Dept, Nelmac, and the Richmond Men's Shed.

The official opening on Sunday 18th July was well attended and a gap in the ad weather was perfectly timed.

However since the completion of the reserve and the removal of the recycling bins a new issue of now enough rubbish dispensers has raised its head. The Reserve and Commercial depts. Of TDC are working together to resolve this.

The completion of the Ngaio Reserve means the MWWG has completed its first task assigned to the group from the Mapua Waterfront Masterplan.

The next tasks are Grossi Point and the waterfront Park. However, both these areas being enhance, improved or even redeveloped are totally dependent on the outcome of the Māpua Boat Clubs request to TDC for a replacement boat ramp discussion. It is pleasing to hear about the recent decision TDC have made to provide funding to the Mapua Boat Club to proceed with their investigations and Resource Consent process to locate a boat ramp within the Waterfront Park. This decision means that the Māpua Waterfront Masterplan is now outdated and will need to be revised to enable the MWWG to know and understand their new remit with regard the Waterfront Park.

Currently, no work (consultation, planning etc) can be considered for Grossi Point until an archaeological report has been undertaken and received and then a final decision on the future use or shared use of the Waterfront Park.

After three years of being an extremely competent chairperson David Martin has stepped down from the role. MWWG is currently looking for a replacement chairperson who is passionate about our community and waterfront locations, who is impartial, and who is willing to give to back to the community. If you know of anyone who may be interested please let me know.

MWWG is a great example of how a co-operative group approach with TDC staff, councillor and community representative group members can work effectively for the benefit of the majority within our community. Well done to all representative groups and their members involved.