

Subject **May 2021 News!**
From Mapua Hall Society <mapuahallsociety@gmail.com>
To <info@ourmapua.org>
Reply-To <mapuahallsociety@gmail.com>
Date 2021-05-13 13:26

roundcube 

News from your community hall



Hello Dear Hall Community,

May is buzzing here at Mapua Hall! First up this weekend is the **Mapua Market on Sunday 16th May from 10am - 2pm** followed by the **Packhouse Cinema at 6.30pm** screening '**Jersey Boys**', tickets for the movie are available on the door from 6.15pm for \$12.

PechaKucha is on **Friday 21st May** tickets are now sold out, ticket holders names will be on the door list when you arrive. Please note the new times for doors open and bar: **Doors open for curry service at 5.30pm** and the presentation begins at 7.30pm. The bar will be available during the service of curry and again at intermission, the bar will be closed during the presentation to avoid distractions, sorry no eftpos.

The **Hall Society AGM** will be held here in the Bill Marris room on **Monday 21st June at 7pm**, all welcome to join us and learn about how the Hall operates and have your say in the future of the Hall. If you wish to cast a vote at the meeting all you need to do is ensure your membership is current for FY22. To renew membership or to become a member of the Mapua Hall Society visit our website MapuaHall.org or click this link to the [Membership Form](#).

Stay safe & take care
From your Hall Coordinator

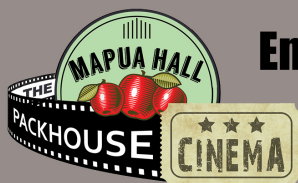
EVENTS



**The Mapua Market returns to the Hall this Sunday
16th May from 10am - 2pm**

Come along to find that perfect gift or just spoil yourself a little, with a great selection from some of our favourite stalls as well as some lovely new additions.

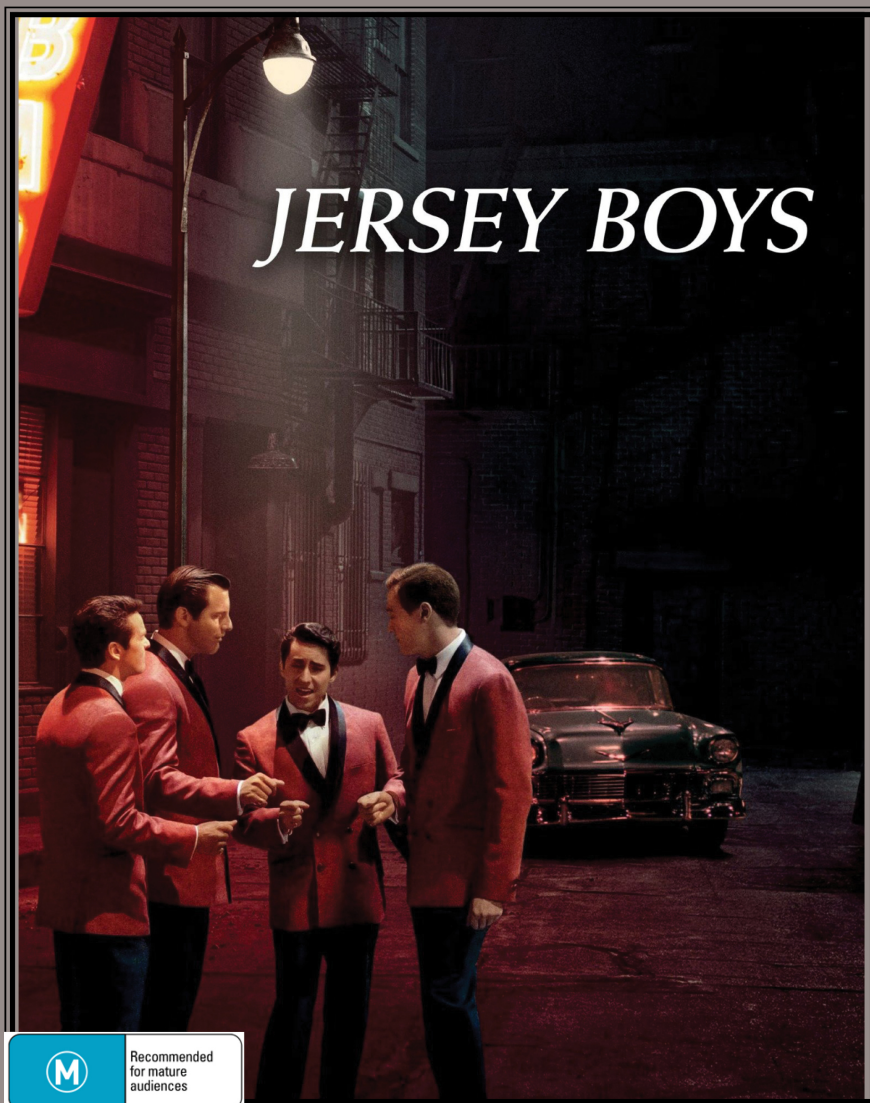
Sunday 16th May



Entry at 6.15

Movie starts at 6.30pm

Bring your own camp chair, snacks & drinks



Proudly Supported by

 **architecture studio | mapua**



"Jersey boys"

Showing at Mapua's famous Packhouse Cinema

Tickets \$12 available at the door from 6.15pm

I saw the stage play in Sydney a couple of years ago. and I was fully prepared to

hate this movie. But, I thoroughly enjoyed it.

It's not so easy to take a stage production and make a good movie. However you can watch this movie, tap your feet and clap along with the music. There was no one behind me so I got up and danced in my seat a couple times. It was AWESOME!!!

The actors are stellar, the music is fantastic and the film completely engrossing. I had a big smile plastered across my face from beginning to end. The audience clapped twice during the movie (it was that good). Most of you know this music and will love it just like Di does. What more do I need to say?

Go see it and have some fun!

A promotional poster for PechaKucha Night 20x20. The poster features a central image of a woman with blonde hair standing at a wooden podium on a stage, presenting. Behind her is a large, colorful, abstract digital artwork. The text 'PechaKucha Night' is written in a white, cursive font across the center, with '20 X 20' in a bold, sans-serif font below it, and 'IMAGES' and 'SECONDS' in smaller text under each number. A large, bold, red 'SOLD OUT' stamp is overlaid on the top half of the image. The poster has a geometric design with pink, blue, and purple triangular sections at the corners.

FRIDAY 21 MAY
7.30PM

MAPUA HALL
TICKETS \$22
Includes entry,
curry or drink

SOLD OUT

PechaKucha Night™

20 X 20
IMAGES SECONDS

PRESALES:
MAPUA HALL
mapuahallsociety@gmail.com
MAPUA FRUIT & VEG SHOP
& JAVA HUT

**BAR OPEN AND
CURRY SERVICE
AT 5.30pm**

PechaKucha is back in 2021!

Tickets are sold out

The ticket holder names will be on the door when you arrive

Ticket includes entry and either a curry or drink.

Doors open at 5.30pm for service of curry

Presentation starts at 7.30pm sharp!

**MAPUA
PUBLIC HALL
SOCIETY
AGM**



**MONDAY
21ST JUNE
7:00 PM
MAPUA HALL**

Interested in joining the committee?







Whatever your passion,
we need you!

Whether it's applying for grants,
general maintenance, fundraising
savvy, financial wizardry or washing
tea towels, come along to the AGM
and find out more about our
community owned and operated
Hall.

MapuaHallSociety@gmail.com

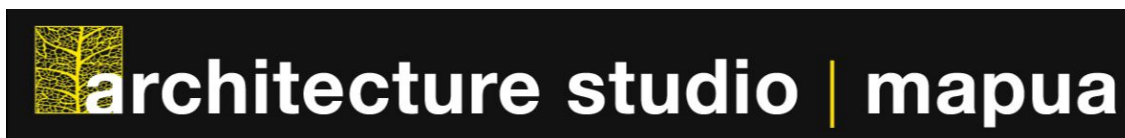
Regular Activities: there may be changes to our regular time table

Please check the live calendar at Mapuahall.org

Regular Weekly Activities at the Māpua Hall 				
MONDAY	TUESDAY	WEDNESDAY	THURSDAY	FRIDAY
<p>9.15 am Yoga with Charlotte</p> <hr/> <p>9.30 am  Superb Dance with Hilary</p> <hr/> <p>3.30 pm Ballet 3-4yrs with Kerry</p> <hr/> <p>4 pm Ballet 5-7yrs with Kerry</p> <hr/> <p>5.30 pm Broga Men's Yoga with Nikki</p> <hr/> <p>6:30 pm Māpua Hall Society Committee meeting <small>Meeting 3rd Monday of month</small></p> <hr/> <p>7.15 pm Māpua & District Community Assoc. <small>Meeting 2nd Monday of month</small></p>	<p>9 am  PANZ Pastel Artists of NZ</p> <hr/> <p>9 am  Sioux Line Dance</p> <hr/> <p>10 am Mapua Creative Fibre <small>2nd Tue of Month</small></p> <hr/> <p>2:00 pm Chair Flair with Hilary</p> <hr/> <p>6 pm Aerobics with Lynda</p> <hr/> <p>6 pm Yoga with Martin</p> <hr/> <p>7 pm Pilates with Lynda</p>	<p>9.15 am Aerobics with Lynda</p> <hr/> <p>9.15 am Yoga for Healthy Aging with Nikki</p> <hr/> <p>10.15 am Pilates with Lynda</p> <hr/> <p>1:30 pm Tai Chi</p>	<p>9.30 am  MAG Art Group <small>Māpua Art Group</small></p> <hr/> <hr/> <hr/> <hr/> <p>3:30 pm Fun Creative with Rachel</p> <hr/> <hr/> <hr/> <p>7.00 pm Māpua Community Choir</p>	<p>9.15 am Aerobics with Lynda</p> <hr/> <p>9.30 am  Superb Dance with Hilary</p> <hr/> <p>10.15 am Pilates with Lynda</p> <hr/> <p>10.45 am Yoga with Martin</p> <hr/> <p>2 pm Friendship Group <small>3rd & last Friday of the month</small></p> <hr/> <p>6.30 pm YOUTH GROUP <small>Most Fridays</small></p>



**Mapua Community Hall
Proudly supported by**





Lottery Grants Board

Te Puna Tahua

.....
LOTTO FUNDS FOR YOUR COMMUNITY



Facebook Website

Please use the Covid-19 tracing QR code to record your visit



**Stay home
if you are sick**



**Keep a 1-metre
distance from others**



**Wash & dry or
sanitise your hands**



**Cough or sneeze
into your elbow**

**Please keep our
workplace safe**

[New Zealand Government](https://www.govt.nz/)

**Unite
against
COVID-19**

For ALL Enquiries: (03) 540 2330 or mapuahallsociety@gmail.com

For bookings: (03) 540 2330 or mapuabookings@gmail.com

Copyright © 2014 Mapua Hall Society, All rights reserved.

Our mailing address is:

72 Aranui Road

Mapua

7005

[unsubscribe from this list](#) [update subscription preferences](#)

This email was sent to info@ourmapua.org

[why did I get this?](#) [unsubscribe from this list](#) [update subscription preferences](#)

Mapua Hall Society Incorporated · 72 Aranui Road · Mapua · Mapua, Nelson 7005 · New Zealand

